

Creating Bootable OS Recovery Flash Drive for BlackJack Cube(Windows)

1. Download Recovery image file , BJCUBE-WIN(SH81R). (File is 16GB)

- Recommend to download to "Download" folder.

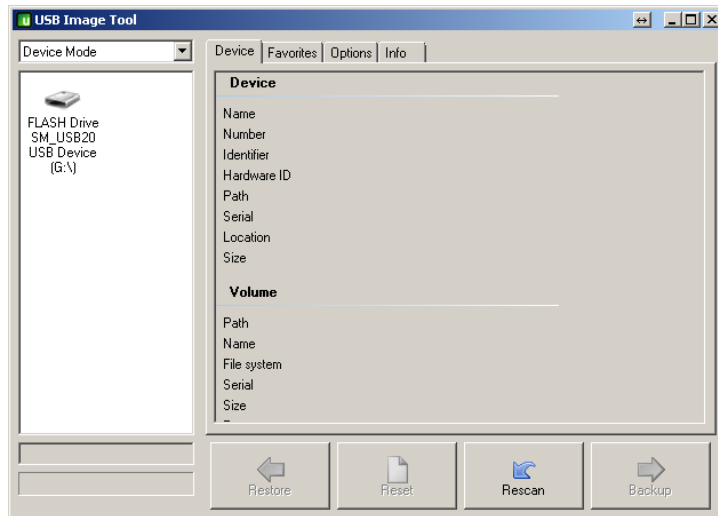
2. Download **usb-image-tool-1-70-en-win.zip** then Unzip and run USB Image Tool.exe.



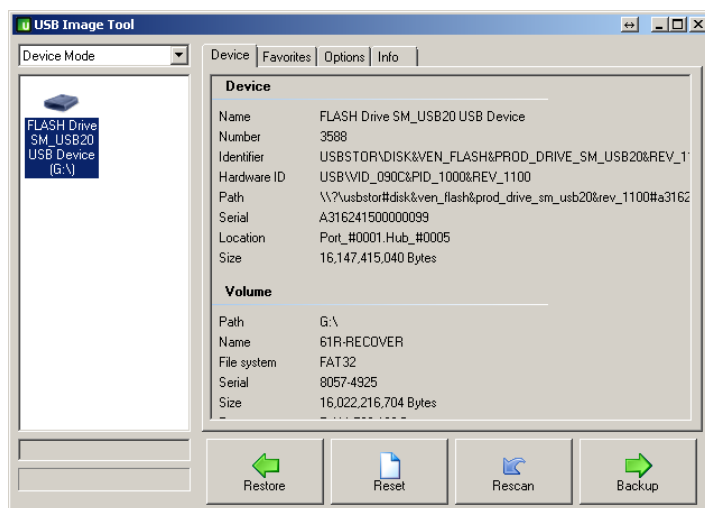
3. Insert formatted USB Flash Drive (Preferrably 16GB)

- No other USB drives should be inserted.

4. Make sure you have only one USB drive listed and the have "Device Mode" is shown.

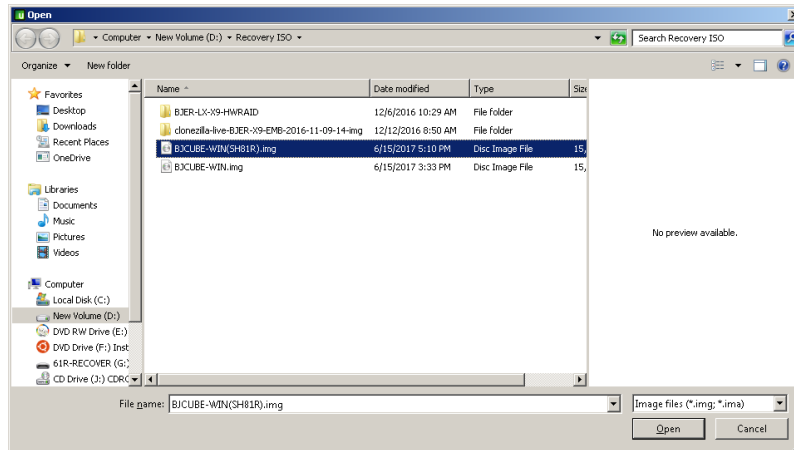


5. Select the USB drive then click Restore



Creating Bootable OS Recovery Flash Drive for BlackJack Cube(Windows)

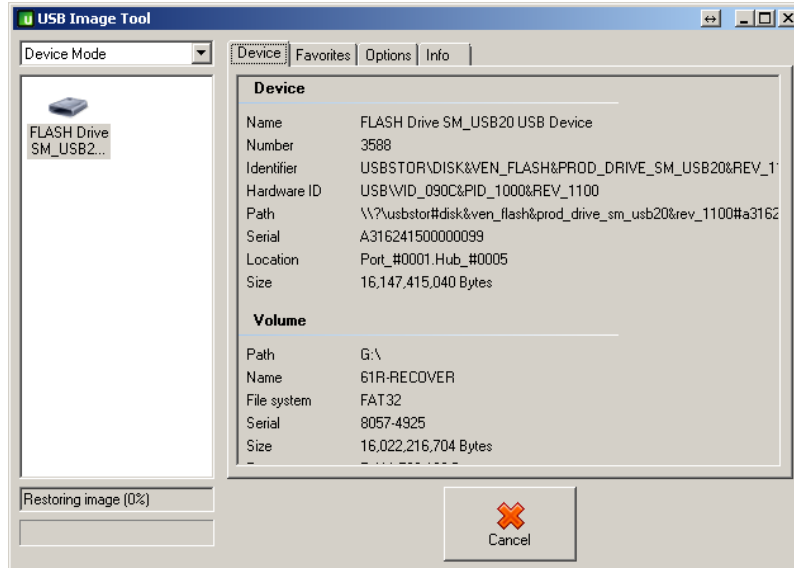
6. Select the BJCUBE-WIN(SH81R).img file then click Open.



7. Click Yes to restore image to USB drive.



8. Wait until finish restoring. May take about 45 to 60min.



9. Follow "Blackjack Cube Windows Recovery Instructions.pdf" to restore the image to the Cube.